

Updating R from R (on Windows) – {installr} package

Upgrading R on Windows is not easy. While the [R FAQ offer guidelines](#), some users may prefer to simply run a command in order to upgrade their R to the latest version. That is what the *new* [{installr}](#) package is all about.

The [{installr}](#) package offers a set of R functions for the installation and updating of software (currently, only on Windows OS).

<https://www.r-statistics.com/tag/check-for-update/>

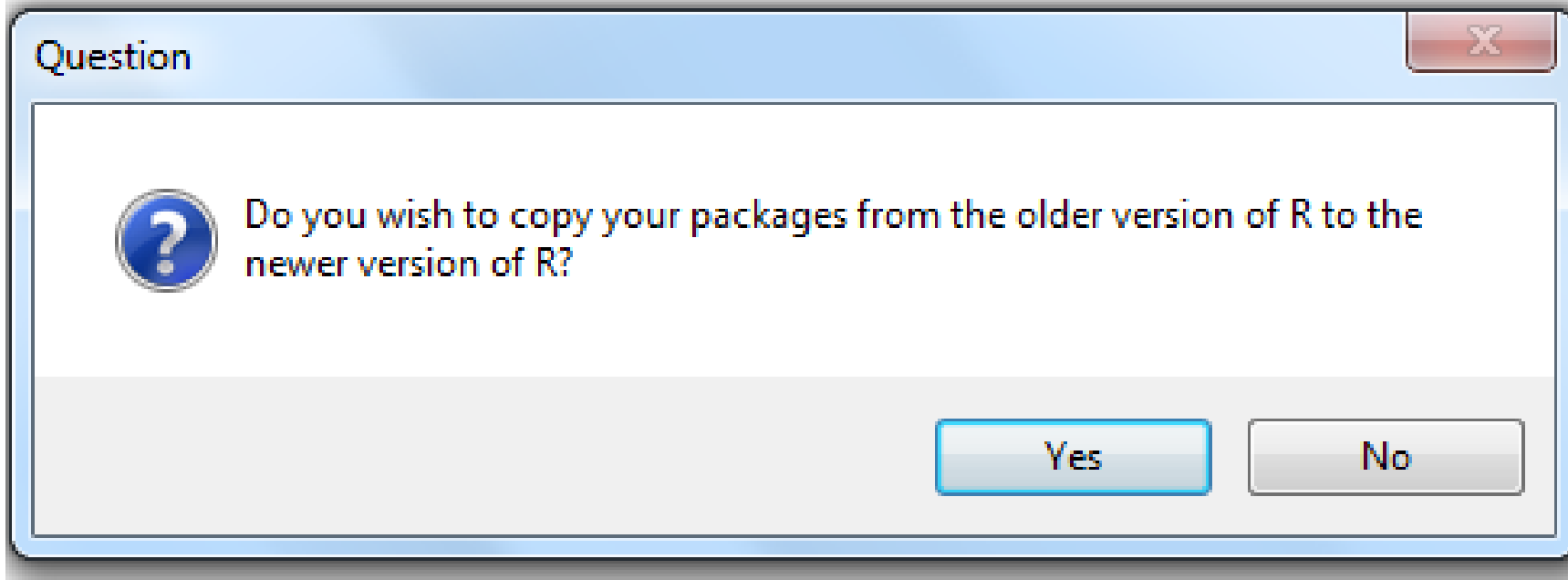
To update R, you can simply run the following code:

```
# installing/loading the package:  
if(!require(installr)) { install.packages("installr");  
require(installr)} #load / install+load installr
```

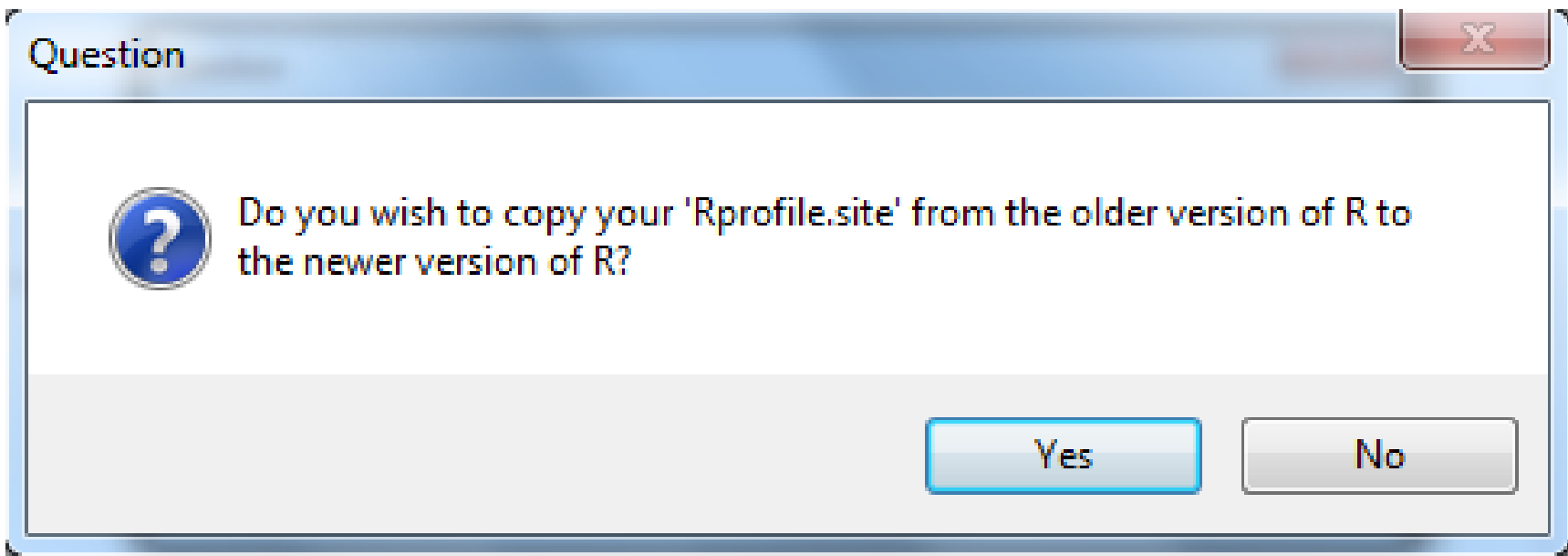
```
# using the package:  
updateR() # this will start the updating process of your  
R installation. It will check for newer versions, and if  
one is available, will guide you through the decisions  
you'd need to make.
```

Running this function performs the following steps:

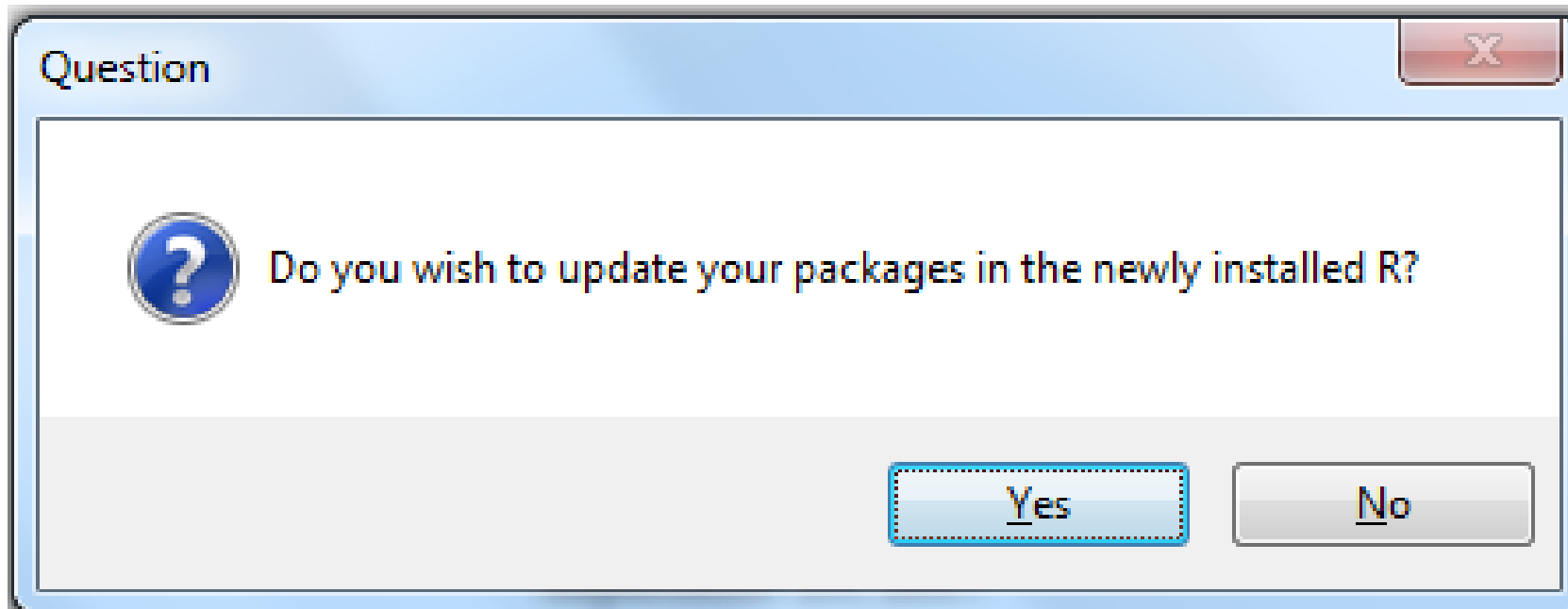
- **Check what is the latest R version.** If the current installed R version is up-to-date, the function ends (and returns FALSE)
- If a newer version is available, you will be asked if to **review the NEWS** of the latest R version – in order to decide if to install the newest R or not.
- If you wish it – the function will **download and install** the latest R version. (you will need to press the "next" buttons on your own)
- Once the installation is done, you should press "any-key", and the function will proceed with **copying all of your packages** from your old (well, current) R installation, into your newer R installation.
- You can then **erase** all of the **packages** in your **old R** installation.
- After your packages are moved (and the old ones possibly erased), you will get the option to **update** all of your **packages** in the new version of R.



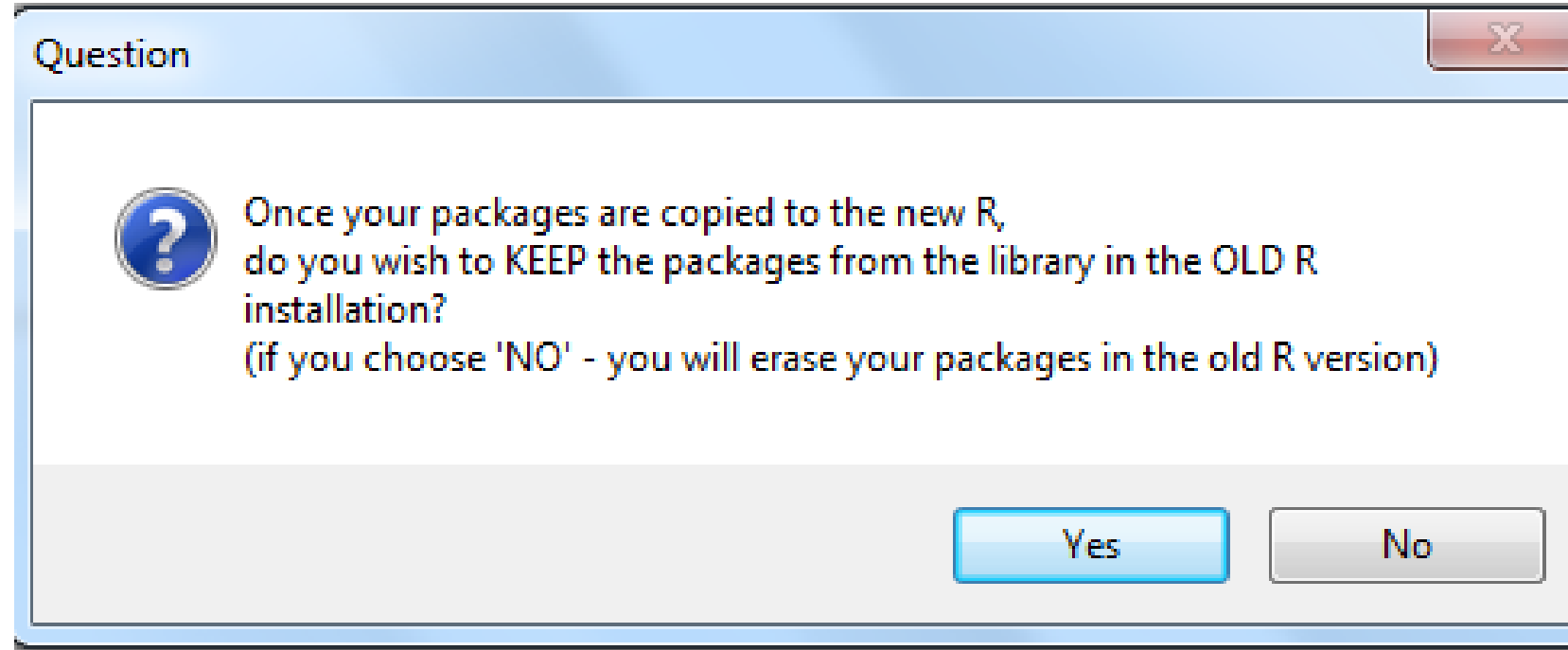
Copy installed R packages from older version to newer version



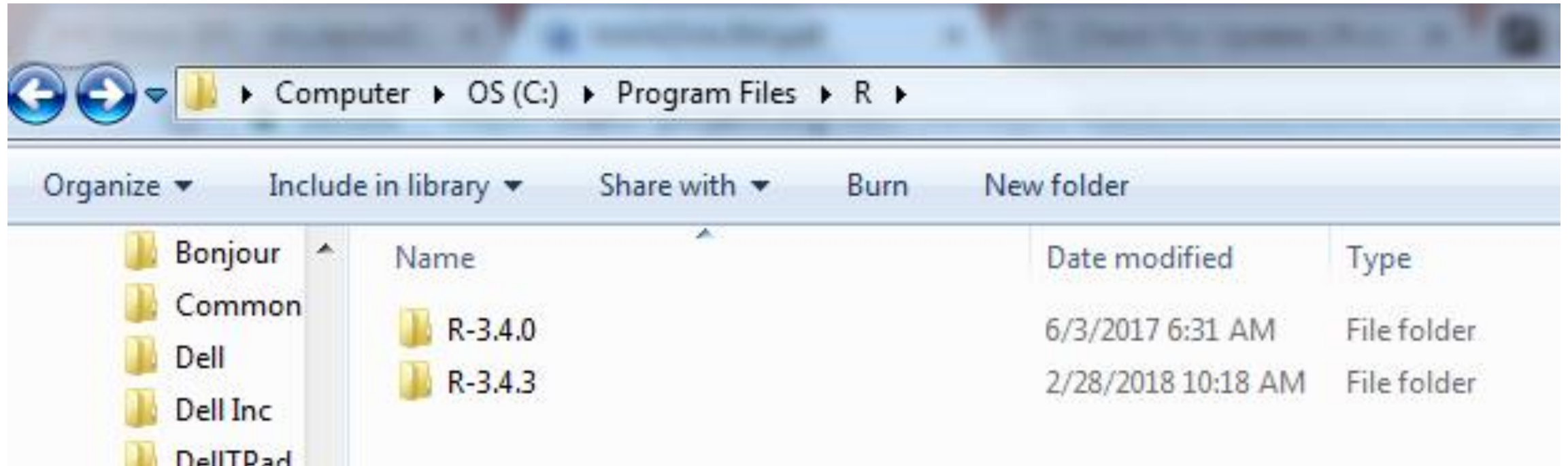
Copy Rprofile.site from older to newer version. This file customizes the R environment (wd)



Update all
installed R
packages



After copying the
packages to new
R, what do you
do with the old R
packages?



NOTE: When update is completed, you have two R folders.

Erase the older version (R-3.4.0)